

# Challenger Version 8 Readers.

# AN11

This document provides details of the programming requirements for adding readers to a Version 8 Challenger System for use in Alarm Control and/or Access Control functions.

**Each reader connected to the Challenger LAN system is programmed as an Arming Station.**

Readers on the Challenger LAN are intended to perform alarm control functions on a single area and/or access a door.

On a Version 8 Challenger Panel LAN a "Reader" may be:

**TS0007** Magnetic Card Reader & RAS

**TS0008** Magnetic Card Reader

**TS0065** Wiegand Interface with **TS1xxx** Proximity Reader

**TS0065** Wiegand Interface with **TS3xxx** Wiegand Reader

**TS0063** Wiegand Interface with Standard 26 Bit Wiegand Reader  
(Proximity, Wiegand, Bar Code, Scramble keypad, etc)

**TS0064** Expanded Button Interface may be connected to TS0063 or TS0065 to provide  
IN and OUT buttons for alarm control functions.

A programming flow chart is provided at the end of this document for quick reference.

## Accessing the Install Menu:

To display menu option 19 (Install Menu) in the User menu, the alarm group of the user code must allow it. The Master Installer is User Number 50. The default master PIN code (User 50) = 4346. The master PIN code should be changed. The Alarm Group assigned to User 50 should never be changed.

The Installer menu is accessed via the User menu and is User menu option 19.

The system must be disarmed before it is possible to use the Installer Menu.

To disarm the system:

**4 3 4 6** (Master PIN code) **<OFF>** then **0** (Select all areas) **<ENTER>**

To access the Install Menu:

**<MENU>** **4 3 4 6** (Master PIN code) **<ENTER>** Accesses User Menu.  
then **1 9** **<ENTER>** Selects Install Menu

The logo consists of the letters 'AN11' in a bold, white, sans-serif font, oriented vertically on a black rectangular background.

1. Determine how the Reader is to be used in the system and fill out the appropriate programming sheets.

Blank programming sheets are found at the rear of the Version 8 Programming guide.

For this application you will need to consider the following Installer Menu databases.

For Alarm Control functions:

- 3. Arming Stations
- 5. Alarm Groups
- 10. Text Words
- 13. Time Zones
- 20. Site Code
- plus Door Groups. (USER MENU Option 20)
- Users (USER MENU Option 14)

For Access Control functions:

- 3. Arming Stations
- 5. Alarm Groups
- 6. Timers
- 10. Text Words
- 13. Time Zones
- 16. Map Relays
- 20. Site Code
- 21. Input Shunts
- plus Door Groups. (USER MENU Option 20)
- Users (USER MENU Option 14)

2. Program any TEXT WORDS if required for the Arming Station's alarm group name/s if not already provided in the word library.

Up to 100 custom words can be added to the library.

TEXT WORDS are programmed in Installer Menu Option 10: - Text Words.

From the Install Menu select Option 10.

**1 0** (Menu Option) **<ENTER>**

**<\*>** Scroll through the list of programmable words.

Select a word number to program or change.

**???** (Word reference number) **<ENTER>**

Use the keypad text option to enter each character of the word.

**?** (Number/letter) **<ENTER>**

**<\*>** Save & display the word.

**<\*>** Exit to word number selection display.

### 3. Program any TIMEZONES that may be required in order to limit the alarm or access control functions of the Reader/s to specific time periods.

#### TIMEZONES 1 to 24

There are 24 "Real-time" timezones in the system, based on the built-in real-time clock.

Each Timezone may have up to 4 segments, each programmed with a Start time, End time and Days.

e.g.

#### TIMEZONE 1: AREA 4 READER

		START	END	
Tz 1.1	Mo Tu We Th	08:30	18:00	
	- - - - -			
Tz 1.2		08:30	21:30	
	- - - - -		Fri	
Tz 1.3		08:30	13:00	
	- - - - -		Sat	
Tz 1.4		00:00	00:00	
	- - - - -			

#### TIMEZONE 2: DOOR 3 ACCESS

		START	END	
Tz 2.1	Mo Tu We Th	08:30	17:00	
	- - - - -		Fr	
Tz 2.2		08:30	12:30	
	- - - - -		Sat	
Tz 2.3		00:00	00:00	
	- - - - -			
Tz 2.4		00:00	00:00	
	- - - - -			

Timezone 0 is always valid 24 hours every day. It may be used wherever a 24 hr Timezone is required.

TIMEZONES 1 to 24 are programmed in Installer Menu Option 13.

From the Install Menu select Option 13.

**1 3** (Menu Option) **<ENTER>**

Select a Timezone number to program.

**??** (Timezone number) **<ENTER>**

# Program the Start and End times for segment 1

**??** (Start Hours) **<ENTER>**  
**??** (Start Minutes) **<ENTER>**  
**??** (End Hours) **<ENTER>**  
**??** (End Minutes) **<ENTER>**

and/or  
 Check details on LCD then **<ENTER>**

Specify the Days for segment 1.

**?** (Day) **<ENTER>** For each day required

- 1 Sunday
- 2 Monday
- 3 Tuesday
- 4 Wednesday
- 5 Thursday
- 6 Friday
- 7 Saturday
- 8 Holiday

and/or  
 Check details on LCD then **<ENTER>**

Repeat procedure from "#" for segments 2 to 4.

**<ENTER>** Exit to Timezone number selection display.



#### 4. Program the ALARM GROUP/S required for the Reader/s in your system.

One of the pre-programmed alarm groups may be suitable so this step may not be necessary.

An Alarm Group defines the area/s, Alarm control functions and User menu options available to the Arming Station to which it is assigned.

For a Reader, the User Menu options are irrelevant as there is no LCD display.

If the Reader is to be used for access control only, the alarm group simply defines the area that the Access/Secure LEDs will follow.

The pre-programmed Alarm Groups 14 to 29 are intended for Arming Stations that control a single Area and are ideal for Readers.

Alm Grp 14 = Area 1  
Alm Grp 15 = Area 2 etc.

(Refer to V8 Programming Guide:- Appendix 1, Table 4 for more specific details)

Alarm Groups 30 to 138 have no default programming and are intended to be programmed according to the system requirements.

Program an appropriate name for the Alarm Group

Specify the Area assigned to this Alarm Group.

Specify whether the Alarm Group is going to be assigned to Users.

#### **NOTE:**

If the Reader is to be used for Access Control only, no more Alarm Group programming is required.

Continue on to specify functions if the Reader is to be used for alarm control.

Specify the Alarm System Control functions and features that this Alarm Group will allow (Arm, Disarm, Reset etc.)

ALARM GROUPS are programmed in Installer Menu Option 5.

From the Install Menu select Option 5.

5 (Menu Option) <ENTER>

If a pre-programmed Alarm Group is not suitable, select an Alarm Group to program.

?? (Alarm Group number) <ENTER>

??? (Text word number) <ENTER>

and/or  
Check details on LCD then <ENTER>

?? (Area number) <ENTER> For each area req'd.

and/or  
Check details on LCD then <ENTER>

<\*> (Toggle setting between YES & NO) <ENTER>

Check setting on LCD then <ENTER>

## Alarm System Control

- YES Alarm System Control functions will be allowed, depending on other settings specified in the Alarm Grp.
- NO No Alarm System Control functions will be allowed, regardless of other settings in the Alarm Group

<\*> (Toggle setting between YES & NO) <ENTER>

Check setting on LCD then <ENTER>

## Prompt With List of Areas

Not relevant

## Can User Activate Keyboard Duress

- YES Duress Code will activate Keypad Duress Alarm.

**Note: Only relevant for TS0007.**

<\*> (Toggle setting between YES & NO) <ENTER>

Check setting on LCD then <ENTER>

## Reset System Alarms

- YES If "Latching System Alarms" is set to YES in the System Options, setting this option to YES will allow those alarms to be reset from this RAS.

<\*> (Toggle setting between YES & NO) <ENTER>

Check setting on LCD then <ENTER>

## Disable Auto De-isolate

- YES Prevents certain users (eg cleaners) from being able to automatically de-isolate inputs in the area they disarm.

<\*> (Toggle setting between YES & NO) <ENTER>

Check setting on LCD then <ENTER>

## Arm & Reset Only

### Disarm Only

### Alarm Reset Only

- YES Setting one of these options to YES will restrict the level of Alarm System Control as specified.

<\*> (Toggle setting between YES & NO) <ENTER>

Check setting on LCD then <ENTER>

## Auto Isolate Unsealed Inputs

- YES Allows unsealed inputs to auto isolate when arming to prevent them causing alarms.

<\*> (Toggle setting between YES & NO) <ENTER>

Check setting on LCD then <ENTER>

## Forced Arming When Unsealed Inputs

- YES Area/s will arm regardless of any unsealed inputs which may subsequently cause an alarm.

<\*> (Toggle setting between YES & NO) <ENTER>

Check setting on LCD then <ENTER>

## Prevent Forced Disarming

- YES Area/s cannot be disarmed if there are unsealed inputs. (Access alarms)

<\*> (Toggle setting between YES & NO) <ENTER>

Check setting on LCD then <ENTER>

## User Categories

(See AN16 - The Timed Disarm Functions for details on the programming of User Category functions)

## Prevent Arming If Category Not Timing

(See AN16 - The Timed Disarm Functions for details on the programming of User Category functions)

0 To move on to the User Menu List.



USER MENU OPTIONS are not relevant to Readers.

An Alarm Group can be restricted to be valid only during a specific time period. To achieve this a TIMEZONE is assigned to the Alarm Group.

"No Timezone" specifies the Alarm Group is ALWAYS valid.

If a Timezone restriction has been specified for an Alarm Group, you may assign an ALTERNATE ALARM GROUP that will take effect when the Timezone on this Alarm Group is not valid.

You must then program the alternate Alarm Group to specify the new Area/s, functions, options etc. that will be relevant.

## 5. Program **ARMING STATION DETAILS** for each Reader.

Specify the Arming Station (RAS) number/s to be polled by The Challenger panel.

If the Arming Station is not yet powered up and addressed, polling the RAS will cause a "RAS Fail" condition.

It is recommended that RASs not be programmed to be polled until they are actually powered and addressed correctly.

(See relevant Installation guide for details)

Specify the details for each RAS to be polled.

Program the relevant options for each Arming Station. Options not relevant to a Readers are not described here and should be disregarded at this stage.

### Area Alarm Group

The Area Alarm Group defines the area/s, alarm control and user menu options available at this arming station.

Assign an appropriate alarm group from the factory defaults or the alarm groups you have programmed specially for the system.

### Menu Alarm Group

Not relevant to Readers.

**0** To move on to the Timezone assignment.

Specify a Timezone if required.

?? (Timezone number) **<ENTER>**

and/or

Check details on LCD then **<ENTER>**

Specify an alternate Alarm Group if required.

?? (Alarm Group number) **<ENTER>**

and/or

Check details on LCD then **<ENTER>**

ARMING STATIONS are programmed in Installer Menu Option 3.

From the Install Menu select Option 3.

**3** (Menu Option) **<ENTER>**

Enter the number/s of the RASs to be polled.

?? (RAS number) **<ENTER>** For each RAS reqd.

and/or

Check details on LCD then **<ENTER>**

Select the RAS to be programmed.

?? (RAS number) **<ENTER>**

?? (Alarm Group number) **<ENTER>**

and/or

Check details on LCD then **<ENTER>**

Check details on LCD then **<ENTER>**

## Door Event Flag

If the Reader is to activate a relay to unlock a door, then a Door Event Flag number must be entered here.

Any Event Flag number from 17 to 256 may be used, as long as it is not used elsewhere in the system.

If you know the Relay number of the relay that is to be used to unlock the door, you may choose to make the Event Flag number the same.

?? (Event Flag number) <ENTER>

and/or  
Check details on LCD then <ENTER>

## Relay Control Group

If the Open Collector output on the Reader or Wiegand interface is to be used to activate a Warning buzzer or a relay etc., then a Relay Control Group must be assigned to the Arming Station.

The Open Collector output is treated as a system relay. To define the relay number for this output, a Relay Control Group is assigned and the output becomes the first relay number in the Group.

?? (Relay Control Group number) <ENTER>

and/or  
Check details on LCD then <ENTER>

It is recommended to use higher relay control group numbers to avoid the possibility of having relay numbers on Arming Stations that clash with relay numbers on relay cards connected to the panel or DGPs.

e.g. Assigning Relay Control Group 30 would make the Open Collector output; Relay Number 233.

Group .....	Relay Nos	Group .....	Relay Nos
1 .....	1 -8	9 .....	65 -72
2 .....	9 -16	10 .....	73 -80
3 .....	17 -24	11 .....	81 -88
4 .....	25 -32	12 .....	89 -96
5 .....	33 -40	13 .....	97 -104
6 .....	41 -48	14 .....	105-112
7 .....	49 -56	15 .....	113-120
8 .....	57 -64	16 .....	121-128

Group .....	Relay Nos	Group .....	Relay Nos
17 .....	129-136	25 .....	193-200
18 .....	137-144	26 .....	201-208
19 .....	145-152	27 .....	209-216
20 .....	153-160	28 .....	217-224
21 .....	161-168	29 .....	225-232
22 .....	169-176	30 .....	233-240
23 .....	177-184	31 .....	241-248
24 .....	185-192	32 .....	249-256.

## LCD Arming Station

Set to NO for Readers.

<\*> (Toggle setting between YES & NO) <ENTER>

## Toggle Keyboard Control

**Note: Only relevant on TS0007.**

It is recommended that this option be left at NO and the client instructed to perform alarm control functions with the ON & OFF keys.

and/or  
Check setting on LCD then <ENTER>

If the client wishes to use the ENTER key for Arming & Disarming instead of the ON & OFF keys, then this option is set to YES.

See: "Programming Card Readers for Alarm Control" table at the end of this document.

<\*> (Toggle setting between YES & NO) <ENTER>

and/or  
Check setting on LCD then <ENTER>

## Enter Key Opens Door Only

**Note: Not relevant to readers.**

Set to NO

<\*> (Toggle setting between YES & NO) <ENTER>

and/or  
Check setting on LCD then <ENTER>



## Door Event Flag on Alarm Codes.

### **Note: Only relevant to TS0007**

YES The door event flag will operate when any valid alarm code OR door code is used.

NO The door event flag will only operate using a door code.

See "Alarm Code prefix" in "System Options"

<\*> (Toggle setting between YES & NO) <ENTER>

and/or  
Check setting on LCD then <ENTER>

## Card Auto Disarms

If you require presentation of a card to automatically disarm the relevant area/s without pressing an IN button after the card is presented, set this option to YES.

See: "Programming Card Readers for Alarm Control" table at the end of this document.

<\*> (Toggle setting between YES & NO) <ENTER>

and/or  
Check setting on LCD then <ENTER>

## Card Always Disarms/Arms

If you require presentation of a card to automatically disarm or arm the relevant area/s without pressing an IN or OUT button after the card is presented, set this option to YES.

See: "Programming Card Readers for Alarm Control" table at the end of this document.

<\*> (Toggle setting between YES & NO) <ENTER>

and/or  
Check setting on LCD then <ENTER>

## Reset Without Code

### **Note: Only relevant to TS0007**

If it is not necessary for a user to enter a code to reset alarms which have occurred in the area assigned to this Arming Station's Alarm Group, set this option to YES.

<\*> (Toggle setting between YES & NO) <ENTER>

and/or  
Check setting on LCD then <ENTER>

This procedure is repeated for each Arming Station in the system.

## 6. Program the SITE CODE (facility code) of the cards/keys/tokens to be used with the reader/s.

SITE CODE/S are programmed in Installer Menu Option 20.

Install Menu option 25:-Display Last Card may be used to read the Facility Code (FC) from a card.

From the Install Menu select Option 20.

**2 0** (Menu Option) <ENTER>

### Program Site Code A.

Add leading 0's to any site code that is not already 6 digits long.

?????? (6 Digit Site code) <ENTER>

and/or  
Check details on LCD then <ENTER>

If you wish the card users to be entered into the system as a number other than the card ID number, program Card Offset A.

The Card Offset is then applied to every card on site code A to produce a new user number.

e.g. Lowest Card ID number is 1500

Program an Offset of -1499

User number for that card is now User 1.

???? (Offset Value) <ENTER>  
\* (Toggle between + & - offset)

and/or  
Check details on LCD then <ENTER>

Program Site Code B and Card Offset B if required. Site Code B may need to be programmed if two different batches of cards are being used or if two different reader technologies are used. A separate card offset may also be applied to Site Code B.

As above



## 7. Program DOOR GROUPS to specify which Door/s (Readers) a user may perform access or alarm control functions on.

Each User in the system may be assigned one "Door Group"

Each Door Group contains a list of door numbers, and a time zone for each individual door within the group.

Authorized access by a user at a particular door is only allowed during the timezone specified for that particular door in the user's Door Group.

Select a Door Group to program.  
There are 10 Door groups with standard memory or 128 Door Groups with memory expansion fitted.

Select the Door number to add to the Door Group.  
The Door number is the same as the Arming Station address of the Arming Station (Reader) that will unlock the door.

Enter the timezone number for the door selected, or disable the door in this group.

### **NOTE:**

**If the Reader is to be used for Alarm Control only, no more programming is required.**

**Continue on to specify relay mapping and input shunting functions for Access control.**

## 8. If the Reader is activating a Relay to unlock a door, program the "Door/s Access Time" in the TIMERS menu option.

Door/s Access Time (seconds)  
Default setting is 5 seconds.

## 9. If the Reader is activating a relay to unlock a door, determine the "Relay Number" of the relay you wish to use. The relay numbers allocated for the panel and each DGP address are listed in the table opposite.

If the Open Collector output on the Magnetic Card reader or the "LO" Open Collector output on the Wiegand Interface are to be used to activate a relay for the lock, refer to the "Relay Control Group" table on page 7 for the relay number required.

DOOR GROUPS are programmed in User Menu Option 20.

From the User (Main) Menu select Option 20.

**2 0** (Menu Option) <ENTER>

?? (Door Group number) <ENTER>

?? (Door number) <ENTER>

?? (Timezone number) <ENTER> or  
\* (Disable door) <ENTER>

Return to selection of another Door number to add to the Door Group.  
<ENTER> to select another Door Group to program.

TIMERS are programmed in Installer Menu Option 6.

From the Install Menu select Option 6.

**6** (Menu Option) <ENTER>

?? (Time period) <ENTER>

and/or  
Check details on LCD then <ENTER>

### RELAY NUMBERING

Challenger Panel	1 to 255
DGP 1	17-32
DGP 2	33-48
DGP 3	49-64
DGP 4	65-80
DGP 5	81-96
DGP 6	97-112
DGP 7	113-128
DGP 8	129-144
DGP 9	145-160
DGP 10	161-176
DGP 11	177-192
DGP 12	193-208
DGP 13	209-224
DGP 14	225-240
DGP 15	241-255

**10. If the Reader is activating a relay to unlock a door, program the details for the relay.**

Select the relay number that is to be used to unlock the door. (Determined in the previous step)

Enter the "Door Event Flag" number that was assigned to the Arming Station (Reader) in step 6.

If you require the door to be held unlocked or locked for specific time period/s, assign the Timezone that will control the relay.  
Note that the timezone will override the event flag.

If a Timezone has been assigned, select whether the relay is to be held ACTIVE or INACTIVE during the timezone.

If the relay is required to operate in INVERTED mode.

Exit to the Installer Menu.

**11. If an input is required to be shunted (disabled) for a period of time when the Door Access function is performed at the Reader, a SHUNT TIMER must be programmed.**

A Shunt timer allows the Door Contact to be shunted for long enough to allow access through the door without causing an alarm.

Select a Shunt Timer number to program. The Shunt timer number must be the same number as the Arming Station Address.

Specify the Input number that is to be shunted. e.g. The input that the door contact is wired to. See AN1: Basic Alarm System Programming for information on how to program the Input if req'd.

If another system function is to also shunt this input a Relay Number may be assigned that will shunt the input whenever the relay is active.

RELAYS are programmed in Installer Menu Option 16: - Relay Mapping.

From the Install Menu select Option 16.

1 6 (Menu Option) <ENTER>

?? (Relay Number) <ENTER>

?? (Event Flag number) <ENTER>

Check details on LCD then <ENTER>

?? (Timezone number) <ENTER>

Check details on LCD then <ENTER>

<\*> (Toggle "Active/Inactive") <ENTER>

<\*> (Toggle "NON-Inverted/Inverted") <ENTER>

<ENTER>

INPUT SHUNT TIMERS are programmed in Installer Menu Option 21.

From the Installer Menu select Option 21.

2 1 (Menu Option) <ENTER>

?? (Shunt timer number) <ENTER>

?? (Input number) <ENTER>

and/or  
Check setting on LCD then <ENTER>

?? (Relay number) <ENTER>

and/or  
Check setting on LCD then <ENTER>

Specify the amount of time that the input will be shunted by programming the Shunt Time.  
If the value entered is less than 128, the time is in seconds. Use seconds where possible.  
A value of 129 to 256 represents a period of 1 to 127 minutes. i.e. Time required in minutes + 128 = the value entered.  
e.g. For 30 minutes enter 158 (128 + 30 = 158)

?? (Shunt time) <ENTER>

and/or  
Check setting on LCD then <ENTER>

If a warning indication is required before the Shunt timer expires, then a Warning Time is specified.  
The warning time value entered will be in seconds if the shunt time is in seconds, and minutes if the shunt time is in minutes.

?? (Warning time) <ENTER>

and/or  
Check setting on LCD then <ENTER>

If an indication is required when the shunt timer is running a Shunt Event Flag may be programmed that may be used to activate a relay etc.

?? (Event Flag number) <ENTER>

and/or  
Check setting on LCD then <ENTER>

If an indication is required when the warning time is running a Shunt Warning Event Flag may be programmed that may be used to activate a relay etc.

?? (Event Flag number) <ENTER>

and/or  
Check setting on LCD then <ENTER>

To ensure that only a valid door access command at the reader will activate the Shunt Timer set the Door Open Command to YES.

<\*> (Toggle setting between YES & NO) <ENTER>

and/or  
Check setting on LCD then <ENTER>

To specify when the input is to be shunted in relation to the status of the area/s assigned to the input, set one or both of the questions: Door Shunted in Access & Door Shunted in Secure to YES.

<\*> (Toggle setting between YES & NO) <ENTER>

and/or  
Check setting on LCD then <ENTER>

If you require the input assigned to the shunt timer to cancel the door event flag and cancel the shunt timer when it reseals, set Cancel Door Event Flag to YES. This prevents the door being opened a second time, unless the card is presented again.

<\*> (Toggle setting between YES & NO) <ENTER>

and/or  
Check setting on LCD then <ENTER>

If Drop bolts or Magnalocks etc, are used set Input Holds Door Event At 2 Secs to YES to allow a settling (debounce) time after the door is closed before it re-locks.

<\*> (Toggle setting between YES & NO) <ENTER>

and/or  
Check setting on LCD then <ENTER>

Entry/Exit Shunting is set to YES if the door may be accessed before the card is presented at the reader.  
Note: If YES, "Door Open Command" must be NO.

<\*> (Toggle setting between YES & NO) <ENTER>

and/or  
Check setting on LCD then <ENTER>

Report Door Open/Close will cause the input to report to Printer/Computer when unsealed & resealed if set to YES.

<\*> (Toggle setting between YES & NO) <ENTER>

and/or  
Check setting on LCD then <ENTER>



**12. USERS will be programmed in the normal manner, but you must ensure that any Users who are to perform any access or alarm control functions with the reader must have an appropriate Door Group assigned to them.**

The client will normally have the authority to program users into their system.

This programming option may not need to be performed by the Installer except to ensure that a user is programmed into the system who has the necessary authority to program the remaining users.

It is important that the client is provided with details of the User's Alarm Groups and Door Groups to facilitate this.

Space is provided at the rear of the User Guide for a summary of the User's Alarm Groups and the Door Groups that the client will use when adding and/or changing users in their system.

Select the Option to CREATE a user.  
This option is also used to change user data.

Select a USER NUMBER to program.  
The User Number is the ID Number of the Card unless a "Card Offset" has been programmed.

Install Menu option 25:-Display Last Card may be used to read the ID number (User) from a card.

Note: User number 50 is the Master Installer Code, and should not be used for cards.

Assign an ALARM GROUP to the user to specify the area/s and functions allowed.

Assign a DOOR GROUP to the user to specify the door/s (reader/s) that the user may perform access and/or alarm control functions from.

It is not necessary to assign a Floor Group for this application.

Program the USER NAME.  
Note: Only possible for Users 1 to 200.

Program the User's PIN CODE.  
Note: Only possible for Users 1 to 1000.

USERS are programmed in the User Menu Option 14.

From the User (Main) Menu select Option 14.

**1 4** (Menu Option) **<ENTER>**

**3** (Create) **<ENTER>**

**?** (User Number) **<ENTER>**

**??** (Alarm Group number) **<ENTER>**

and/or  
Check details on LCD then **<ENTER>**

**??** (Door Group number) **<ENTER>**

and/or  
Check details on LCD then **<ENTER>**

**<ENTER>** Bypass Floor Group option.

**?** (Character) **<ENTER>** For each character of the name.

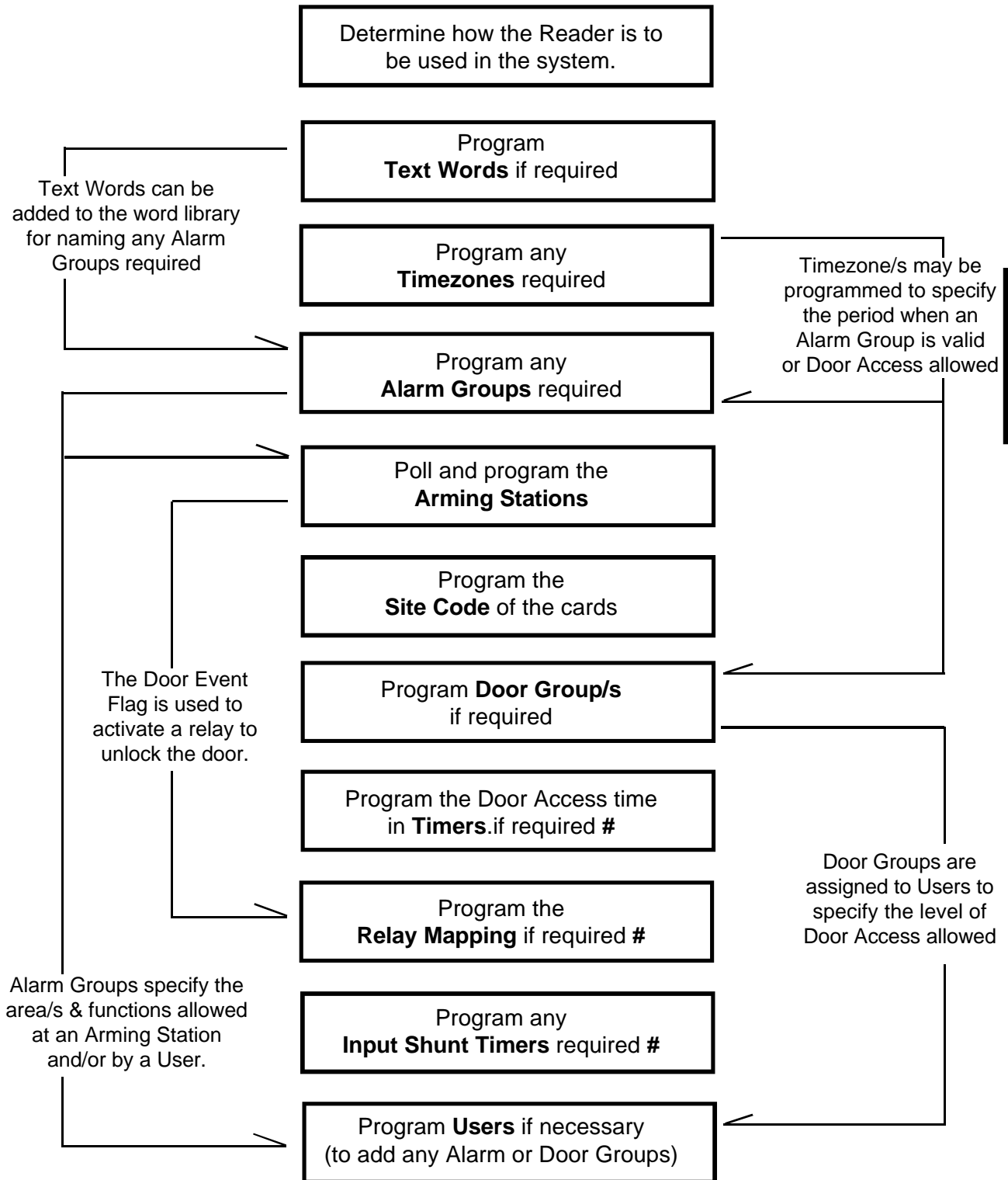
**<\*>** Save & check the name programmed.

**<\*>** Save & move on to next display.

**????** (4 to 10 digit PIN Code) **<ENTER>**

and/or  
Check details on LCD then **<ENTER>**

## SUGGESTED PROGRAMMING SEQUENCE



# These options only need to be programmed if Access Control required.

## Programming Card Readers (TS0007, TS0008, TS0802, TS0063/65 ) for Alarm Control.

FUNCTIONALITY	PROGRAMMING OPTIONS			NOTES
	Toggle Keyboard Control	Card Auto Disarms	Card Always Disarms/Arms	
Card <OFF>- Disarms Card <ON> - Arms	NO	NO	NO	TS0007, TS0802, & TS0063/65+TS0064 Only
Card - Disarms Card <ON> - Arms	NO	YES	NO	No Arming where buttons not available.
Card - Disarms Card - Arms	YES	NO	YES	
Card <ENTER> - Disarms Card <ENTER> - Arms	YES	NO	NO	TS0007, TS0802 ONLY

The Challenger is Designed and Manufactured by:

Tecom Systems Pty. Ltd.  
A.C.N. 005 523 562  
646 Whitehorse Road  
MITCHAM VICTORIA AUSTRALIA 3132

Telephone: 03 9259 4700 Facsimile: 03 9259 4799 [www.tecom.com.au](http://www.tecom.com.au)

© Tecom Systems Pty. Ltd. 1997